



*Automate the routine.
Investigate the extraordinary.*

CYTOMICS FC 500 MPL

FLOW CYTOMETRY SYSTEM WITH MXP SOFTWARE

Part of the Cell Lab family



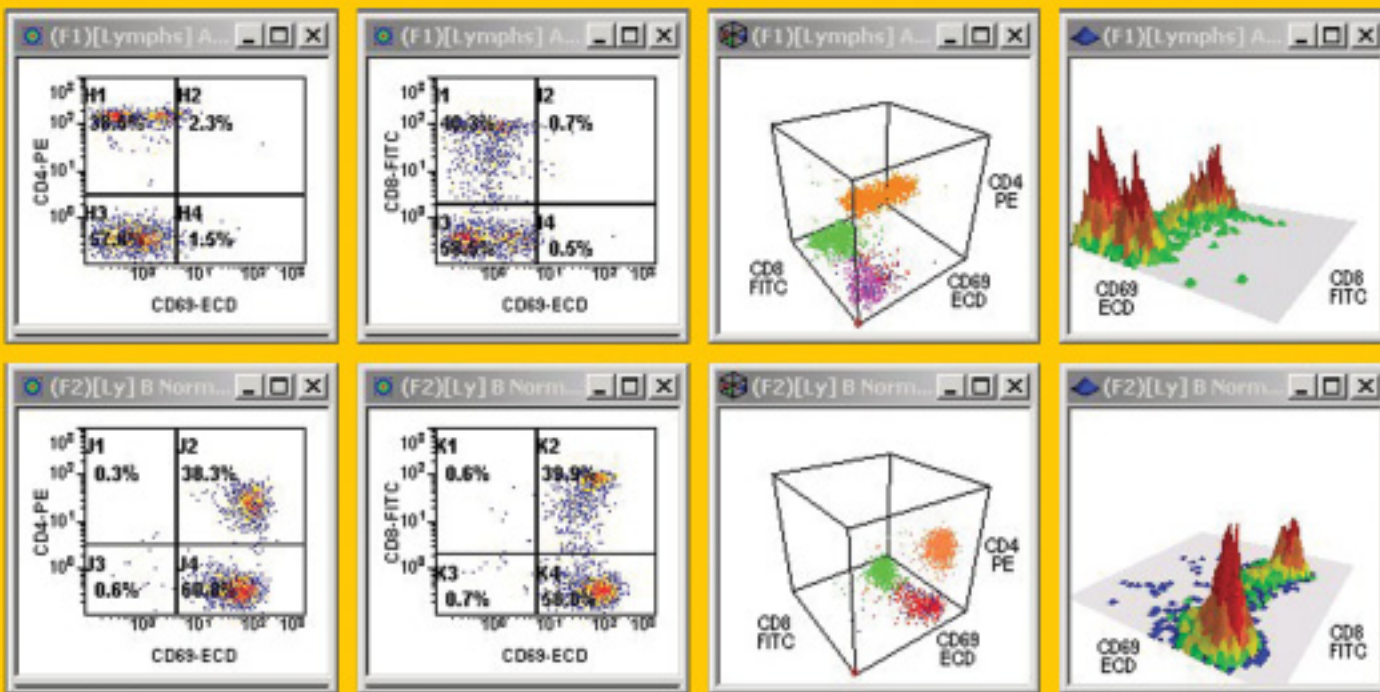


Automated cellular and bead-based multicolor analysis.

With a host of innovative new features, the multi-platform loading Cytomics FC 500 MPL Flow Cytometry System delivers unprecedented productivity for today's busy labs. By automating cellular and bead-based analysis, it maximizes system capabilities and lab efficiency, while automated sample loading provides walkaway analysis. With high throughput for routine items, and unmatched flexibility for research, the FC 500 MPL helps you do your best science, your way.

Thousands of reagents from a single source.

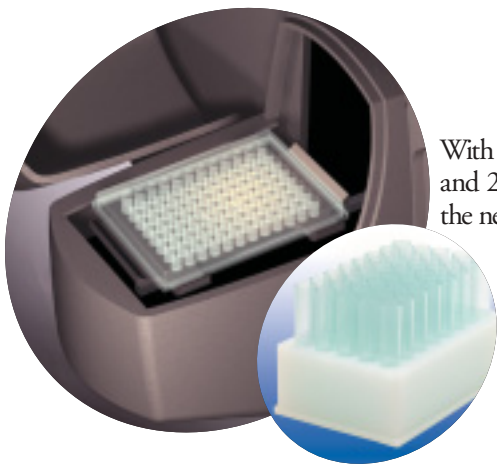
Choose from over a thousand available reagents, or utilize our Custom Design Service to precisely tailor your research applications. Our customization capabilities encompass antibody purification, conjugations using FITC, PE, ECD, PC5, PC5.5, PC7, APC, APC-Cy7, a variety of Alexa Dyes, as well as multicolor color combinations.



Flexible 5-color analysis from one or two lasers.

With its ability to perform automated 5-color analysis using either single or dual laser excitation, the FC 500 MPL provides flexible application design, while helping you examine more antibodies than ever before. The above panel demonstrates how 5-color analysis allows exceptional evaluation of cells under investigation for Activation (CD69)—an important component in the study of immunity regulation. The upper panel displays a normal peripheral whole blood; the lower shows activation with phorbol myristate acetate (PMA). IOTest CD8- FITC/ CD4- PE/ CD3- PC7,* plus the addition of IOTest CD45- APC* and IOTest CD69- ECD* were used in this example.

*For research use only. Not for use in diagnostic procedures.



Tube- and plate-based formats on the same system.

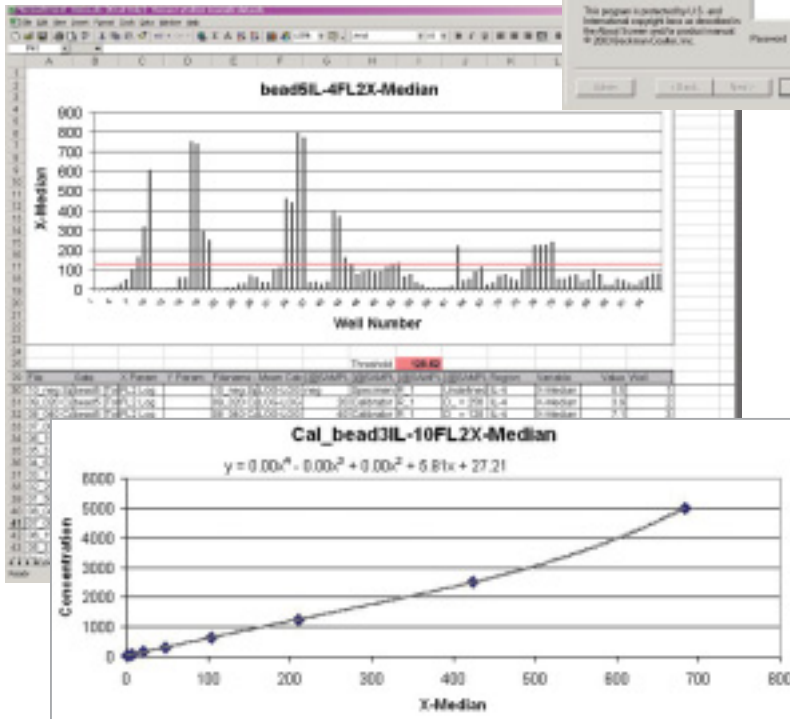
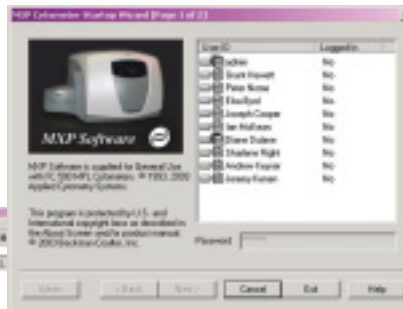
With its innovative Multi-Platform Loader, only the FC 500 MPL allows 12 x 75 mm tubes and 24- or 96-well plates to be used on the same system. Along with AutoSetup capability, the newest FC 500 provides an unparalleled level of adaptability in application setup.

Digital signal processing.

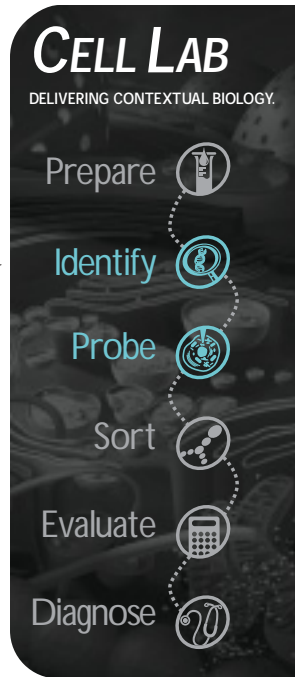
Combined with a robust optical system, the FC 500 MPL's digital signal processing maintains stable alignment with a single beam path for excellent, drift-free linearity. Its real-time or listmode compensation feature delivers wide flexibility in analysis, along with the ability to recompensate after acquisition.



To help you comply with 21 CFR Part 11, our MXP software allows the administrator to set up User ID and password assignments. Additional tools include User ID and Time stamps embedded in the listmode file, as well as Acrobat PDF output, DaCS audit trail, and e-sign capability for MS Excel files.



The Cytomics FC 500 MPL is an important part of a comprehensive set of interrelated solutions specifically designed to accelerate Systems Biology research. By encompassing virtually every step of the process, our flexible and highly efficient systems function as an extension of your thinking, helping you make important research decisions faster and with more confidence than ever before.



Automated analysis tools for data reduction.

With specialized, plate-based acquisition and analysis software, specimen-to-result turnaround time is improved, and throughput is increased. Plus, a simplified data display makes for rapid hit detection. Our powerful, comprehensive MXP software streamlines and optimizes all facets of instrument setup and data acquisition.



Count on us.

Our world-class customer service and support is focused on making sure your Beckman Coulter flow cytometry system functions at peak efficiency throughout its lifetime. Wherever you are, a global network of technical experts is available on-line, on-site, and by phone to help with all your system support needs.

Prepare
Identify
Probe
Sort
Evaluate
Diagnose



- Automated liquid handling
- Automated lysing
- General purpose centrifugation
- High performance centrifugation
- Ultracentrifugation
- Automated fluorescence microscopy
- Cell counting
- Cell markers
- Cell viability analysis
- Flow cytometry
- Monoclonal antibodies
- Automated liquid handling
- Flow cytometry
- Microarray technology
- Monoclonal antibodies
- Signal transduction assays
- Cell sorters
- Micro-piezoelectric tips
- Reagents (various)
- Monoclonal antibodies
- Multi-mode plate reading
- Genomics solutions
- Proteomics solutions
- Software informatics
- Automated liquid handling
- Flow cytometry
- Immunoassays
- Monoclonal antibodies
- Software algorithms

ORDERING INFORMATION

Cytomics FC 500 MPL Flow Cytometry System with MXP Software

Part No.

177884

MPL hardware field upgrade includes: MPL hardware, MXP software, Microsoft Excel software, Multi-file analysis software and 40-tube rack.

Specifications

| Components | Height | Width | Depth | Weight |
|-------------------|-----------------------|-----------------------|------------------------|---------------------|
| Computer | 15.75 cm (6.2 in) | 53.34 cm (21 in) | 42.55 cm (16.75 in) | 18.14 kg (40 lb) |
| Cytometer and MPL | 61.0 cm (24 in) | 97.8 cm (38.5 in) | 88.9 cm (35 in) | 84.8 kg (187 lb) |
| Monitor (typical) | 42.7 cm (16.81 in) | 40.5 cm (15.94 in) | 43.8 cm (17.25 in) | 22 kg (48.4 lb) |
| Power Supply | 50.8 cm (20 in) | 45.7 cm (18 in) | 66.0 cm (26 in) | 54.4 kg (120 lb) |

Power

*US: 2 dedicated lines at 115 Vac, 50/60 Hz at 20 A
Europe: 2 dedicated lines at 220 Vac, 50/60 Hz at 20 A
Japan: 2 dedicated lines at 100 Vac, 50/60 Hz at 20 A*

Excitation

20 mW argon ion laser operating at 488 nm

Part No.

623101

Optional solid-state 25 mW red diode laser operating nominally at 635 nm

The Cytomics FC 500 MPL—and all our CellLab offerings—are an important part of a broad continuum of Beckman Coulter products, including automated liquid handling, capillary electrophoresis, centrifugation, ultracentrifugation, DNA sequencing, electrochemistry, flow cytometry, fragment analysis, HPLC, integrated core systems, microarrays, particle characterization, scintillation counting, and spectrophotometry.

For information on our comprehensive line of systems, please contact your local Beckman Coulter representative or visit our web site at

www.beckmancoulter.com/cell.lab

All trademarks are the property of their respective owners.



Developing innovative solutions in Systems Biology.

Innovate **Automate**
SIMPLIFY

Africa/Middle East/Eastern Europe: Switzerland, Nyon (41) 22 994 0707. Australia, Gladesville (61) 2 9844 6000. Canada, Mississauga (1) 905 819 1234. China, Beijing (86) 10 6515 6028. France, Villepinte (33) 1 49 90 90 00. Germany, Krefeld (49) 2151 33 35. Hong Kong (852) 2814 7431, 2814 0481. Italy, Milan (39) 02 953921. Japan, Tokyo (81) 3 5404 8424. Latin America (1) (305) 380 4709. Mexico, Mexico City (525) 575 6805. Netherlands, Mijdrecht (31) 297 230630. Singapore (65) 339 3633. South Africa, Johannesburg (27) 11 805 2014. Sweden, Bromma (46) 8 564 85 900. Switzerland, Nyon 0800 850 810. Taiwan, Taipei (886) 2 2378 3456. Turkey, Istanbul (90) 216 309 1900. UK, High Wycombe (44) 01494 441181. USA, Miami, FL (1) 800 526 3821, Option 7.